

Sou'wester

The newsletter for CMA members in the South West
www.countrysidemanagement.org.uk

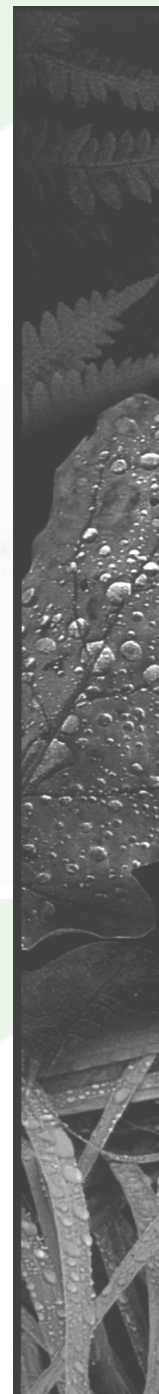
**COUNTRYSIDE
MANAGEMENT
ASSOCIATION**



In this Issue....

May 2007

- Regional AGM pg. 6
- The Training of a Senile Ranger pg. 8
- Coast Path Goes National pg. 18
- CMA Conference 2007 pg. 7



Regional Committee

Chair

Richard Eales

Exmoor National Park
07973 727473
rteales@exmoor-nationalpark.gov.uk

Secretary

Andy Harris

Quantock Hills AONB
01278 732845 (W)
07836794833 (M)
andy.quantockhills@somerset.gov.uk

Training Co-ordinator

Dave Ellacott

The Whitley Wildlife Conservation Trust,
Paignton
01803 697525
dave.ellacott@paigntonzoology.org.uk

Devon (Joint with Training)

Ella Briens

Dartmoor National
01626 832093 (W)
07711 104546 (M)
ellabriens@hotmail.com

Cornwall

See Chair

Somerset

See Chair

Dorset & Wiltshire (below M4)

David Blake

AONB Office,
Cranborne Dorset,
01725 517417 (W)
davidblake@cranbornechasere.org.uk

Herefordshire

Tim Green

Parks & Countryside Service, Herefordshire,
01432 260346 (W)
07792 880208 (M)
tgreen@herefordshire.gov.uk

Worcestershire

Liz Nether

Sites Officer, South Worcestershire

Wiltshire (above M5)

Robert Nicoles

Wiltshire Wildlife Trust
RobertN@wiltshirewildlife.org

Gloucestershire

Sarah Gibbs

Crickley Hill Country park, Gloucester
sarahgibbs3@hotmail.com

Sou'wester Editor

Patrick Watts-Mabbott

Exmoor National Park
07973 727469
cma.souwester@yahoo.co.uk or pwatts-mabbott@exmoor-nationalpark.gov.uk

Mentors for Continuing Professional Development (CPD):

Jeff Cherrington
Ian Rowat
Emma Shambrook
Terry Sweeny

CMA Administration and National Membership Office:

CMA Administration
Writtle College
Lordship Road
Chelmsford
Essex CM1 3RR
01245 424263
cma@writtle.ac.uk

From The Editor

Well Easter's Come and Gone and I've already eaten all my eggs and bought more in the post Easter sales. Always one for a bargain!

Up here on Exmoor we have come to the close of another successful swailing season with all of the planned burns but one (We got a bit scared and didn't have a fire break) getting done before the end of March. The one we didn't do is waiting for next year when there has been time to cut the break through the thick eight foot high gorse.

In the mean time I'll be waiting for my singed hair to grow back and getting on with a seemingly never ending list of rights of way problems, as well as more visitor liaison now the summer is well and truly here.

One Rights of way issue we will not be investigating this year came from an anonymous report complaining of a broken gate on Exmoor. I am fairly certain there is more than one, but am awaiting more details before investigating further.

SO get ready for it

Here it comes

Sou'wester ***May 07***

Enjoy

Patrick

Dead line for the SUMMER Issue 27th July 2007

Send submissions to cma.souwester@yahoo.co.uk

Opinions expressed in The Sou'Wester are those of individual members and not necessarily of the Editor, any other Committee Member or of the CMA.

Chair's Report

Well here we are well into 2007 already, where does time go? Before I continue it would be good if everyone reading this now could make the effort to go to at least one training event this year or to the regional AGM, there are a lot of names on the membership list that I still cannot put faces to.

I attended the National Council meeting back in January and I was very interested to see how the CMA operates Nationally. One of the major discussion points was focused around a new membership framework which I had the joy of commenting on. The new framework is not set in stone and will probably not be implemented until 2008. However, you will be pleased to hear that the new framework does appear to be easier to understand. There are also revisions planned for the accredited membership category and CPD requirements.

Our first regional meeting of the year was held on 7th February at Crickley Hill Country Park, thank you to Sarah Gibbs for the venue and her hospitality. Contact details of potential member organisations within the South West were collected and will now be contacted and County Rep's will now pass on details of colleges in the South West region.

After no response was received from the previous Sou'wester article the committee has decided to actively seek out County Reps for those counties that are currently vacant, please contact me (07973 727473) if you are interested in taking on one of these roles.

The 2007 training plan was agreed and Dave Ellacott (Training Coordinator) will be assisting people in



Chair's Report

organising and promoting their training. I would like to remind members that Dave needs to be notified of any training organised in the South West region rather than just going ahead with it.

Unfortunately George Hammond stood down as Worcestershire County Rep. The committee wish to thank George for all his hard work and support and wish him all the best for the future. George is replaced by Liz Nether, Sites Officer for the South of Worcestershire. We look forward to welcoming Liz at our next meeting.

Two dates that are essential for your diary though are the Regional AGM and National Conference.

The **National Conference**, working title "Paying for Parks", will be held at Stowe Mansion in Buckinghamshire on the **9th and 10th August 2007**. The National committee realise that the dates are in August but this is perhaps a one off opportunity to visit the nationally renowned Stowe landscape gardens and mansion, due to the un-canny negotiating skills of our National Chairman.

The **Regional AGM** will be held at Lanhydrock, Cornwall on the **9th July 2007**. It will focus on Veteran Trees and Tree safety assessments. Please make the effort to attend and book early. The day will not start until mid morning to give us all a chance to get there in reasonable time. Once again please make an effort to get involved with the CMA this year no matter how busy you are a change or a day out with like minded people is as good as a rest. I look forward to meeting you all at our many events throughout 2007.

Richard Eales

Dates for Your Diary

See www.countryside-management.org.uk for an up to date list

9th July 2007 **Regional AGM & Veteran Trees**, Lanhydrock, Cornwall.

9th – 10th August 2007 **CMA Conference**, Stowe Mansion in Buckinghamshire.

20th September 2007. **Orchards – Past, Present and Future**, Bodenham Lake Nature Reserve in Herefordshire.

October 17th 2007 **Fungi Identification for Countryside Managers**, Knighthays, Tiverton, Devon

November date TBC **Navigation Training**, Dartmoor

See page 13 for **Out of Region Training days coming up**

Regional AGM

Veteran Trees

& Tree Safety Assessments

Lanhydrock – Cornwall

9th July 2007

**Put it in your
Diary now**

The day will include a site visit at Lanhydrock to look at veteran trees and tree safety assessments.

There should also be camping available for the Sunday night before the event

Booking is essential please contact Jeff Cherrington on 01288 331372 or Jeff.cherrington@nationaltrust.org.uk

Please book as early as possible the cut off date is 30th June 2007

National Conference

CMA Conference 2007

“Paying for Parks”

Stowe Mansion - Buckinghamshire
9th & 10th August 2007

**Put it in your
Diary now**

A **one off opportunity** to visit the nationally renowned **Stowe landscape gardens and mansion.**

Since the 18th century, Stowe has welcomed monarchs, poets, politicians and high society to delight in the largest, most completely realised, private neo-classical building in the world. Surrounding the house are 300 hectares (750 acres) of historic parkland.

It is hoped that there will be visits to the Nene Valley Regional Park, Milton Keynes Parks Trust, perhaps the Rockingham Forest and Bucks Country Parks (**who are self-financing, raising in the order of £380K per year**).

We may also be able to arrange a visit to the Chilterns AONB to see some of their initiatives.

A detailed programme will be published and forwarded to members shortly.

The Training of a Senile Ranger

So you think you can drive a Land Rover.....!

Since 1984 I have had the pleasure, no perhaps opportunity, to have driven a variety of Land Rovers ranging from a clapped out series 2 that started its life being parachuted to the ground to support the infantry to our most recent model the Defender TD5.

I can honestly say that I have had my fair share of scrapes and accidents including three all within a couple of months of working for the National Park Authority but they have all been my fault especially the ones that left me stuck up to the axles. (Okay, just incase the insurers are reading this, one was the fault of a Canadian couple who happened to look the wrong way when they were pulling out from a junction but hey, all I sustained was a bent number plate!)

Everything I have learnt has come from experience since I have never been on the receiving end of any training. Yes I did fib when I applied to the National Park for the job since I claimed that I had undergone some training in my old job. We did do some road driving with a qualified instructor but when it came to showing us the off road stuff he managed to bend a tie rod within 5 minutes of starting so we never did complete the course! I think he did it on purpose since we scared him half to death with our normal road driving skills!!

So it was a great surprise in February this year to find myself along with two other Rangers being sent to the West Country Land Rover Experience at Wessington Farm near Honiton to undertake a level 2 advanced course! What a place. As part of a farm diversification scheme the owners have set up a modern facility including reception area and indoor classroom and a pretty extensive off road driving area on which to hone the skills

The Training of a Senile Ranger

that you supposedly already possess!

Having completed the necessary paperwork over a coffee and several biscuits we were briefed by our instructor for the day which included the hard sell ie Land Rovers' Fragile Earth policy. You can only applaud them for really emphasizing the issues regarding off road driving but when you have been told for the umpteenth time that they have closed off certain tracks due to frogspawn being found, it did become a little waring. Trying to impress the environmentalists at his mercy you might say!

We were soon out on the range and boy did he make it look easy. He was teaching us techniques that I had never even heard of such as left foot breaking and hill climbs in third gear for example. What ever happened to shoving it in first and "gunning it" I asked only to be told that it was all about better use of the gears to reduce wear on the terrain and using the vehicles strengths! We even learnt how to return from low to high ratio at speed something I would never have dreamed of doing in the past for fear of trashing the box!

I have to say that my colleagues were far more in control than I was and although our instructor was very patient with me by not telling me off every



The Training of a Senile Ranger

time I crossed my hands cornering, the smell of a burning clutch after a tenth unsuccessful hill climb in third did cause a sigh of despair! He did however let me go through the waterhole which I thought at the time showed at least some confidence in my driving or was it perhaps a chance to cool down some overheated parts - I'll never know!!

After a well earned lunch back at the centre (Note - you are given little slip on over boots to save the floor from getting dirty and to avoid you the inconvenience of taking off your boots - now that's what I call service!) we returned to the slopes to undertake self recovery using ropes and natural capstans. Weather conditions were such that getting stuck was easy and at least this was something that for once, I did feel very experienced with! Having reassured us that the tree had not suffered during the operation we did manage to extricate ourselves and finished off the day practicing our new found skills before being awarded our certificates of completion.

All of us felt that it had been a worthwhile day and I only wish that I had been sent on the level one course many years ago. Perhaps the guys at our local service and repair depot do have a point after all when they refer to all my vehicle problems as driver abuse rather than fair wear and tear!! The downside to all this is of course the cost. The standard fee is £300 per person for the level two course. However although I do not know the exact amount we did manage to strike a deal to reduce this since all 9 rangers attended in 3 separate groups.

If you are interested why not give them a ring and haggle! Go Beyond!!!

Wessington Farm, Awliscombe, Honiton, Devon, EX14 3NU.
08702 644471. info@lre9.co.uk

Ian Brooker
Senile Ranger (or an old dog that has been taught new tricks!)
Dartmoor National Park.

An Elephant never forgets

Did You ?

Regional AGM & Veteran Trees,
Lanhydrock, Cornwall. 9th July 2007

CMA Conference, Stowe Mansion in
Buckinghamshire. 9th – 10th August 2007

**Put them in your
Diary now**

More details on pages 6 and 7

Grazed Knees &

Midlands Training Day

Grazed Knees and Grazed Landscapes was an interesting title for a CMA study day that caught my eye whilst browsing the CMA website. The day took place in the Midlands and I decided to go along as it encompassed two diverse areas of my job as a countryside warden.

Grazed Knees - This morning session was held within the visitor centre. We explored ways in which to use play and co-operative games to give positive experiences to visitors and also looked at approaches to stimulate a respect and understanding of the countryside and the wider world. Or put another way, a load of countryside staff got together and had a laugh trying out all the kids games. This was networking in its closest form as we did various games which involved linking arms, foot wrestling, sitting on each others knees and trusting your newly met partner when you had your eyes closed.

Sorry no photos as i was too busy joining in! The study day's leaders John Porter from Birmingham City Council and Phil Armshaw from Cannock Chase Council Countryside Service had a wealth of experience of leading many diverse groups. Apart from the fun we talked of issues such as inclusion for all participants and certain considerations required for different religions.

Grazed Landscapes - In the afternoon it was time to explore the site. Sutton Park is a National Nature Reserve and a massive 2400 acres of land which is accessed by the public. As we listened to the information about the management I could not see any buildings or hear a single car. Standing within the heather watching the Exmoor ponies graze it was hard to remember that we were so close to Birmingham and totally surrounded by urbanisation.

It was impressive to learn that ponies and cattle roamed freely within an urban park that receives 2.5 million visitors a year.

Grazed Landscapes

It was a fun and informative day and I am keen to invite both John and Phil down south to run a study day for us on environmental games.

In the South West we run and promote a good number of study days for members. However as a member you can attend a training day anywhere in the country. With the new CMA website it is possible to access this information. Check it regularly on www.countrysidemanagement.org.uk The Sou'wester is also looking to highlight study days in other regions.

Sarah Gibbs
Gloucestershire Rep.

Out of Region Training days coming up

23rd May 2007 **A look at the oldest and the newest parks in the Northamptonshire , including Recreational zoning & Management of dogs on site.** Stanwick Lakes Irchester Country parks, Northamptonshire. To book or for further information, please contact Nicola Franklin at Brixworth Country Park on **01604 883920** or nfranklin@northamptonshire.gov.uk

2nd July 2007 **Dealing with Horses, Dogs and Bikes on Countryside Sites.** Stockgrove Country Park, Bedfordshire To book please contact Esther Milne 01525 237760 e mail esther.milne@greensandtrust.org

Orchards – Past, Present and Future

Countryside Management Association South West Region Study Day

Traditional orchards are a valuable landscape and bio-diverse habitat as well as a source of income.

This study day will look at the new biodiversity habitat action plan for orchards (due to be launched as we go to press hopefully) and how Herefordshire Council has developed a traditional orchard at **Bodenham Lake Nature Reserve**.

In the afternoon there will be a short tour of an award winning local **cider maker** looking at one possible end use of fruit.

Location – Bodenham Lake Nature Reserve, Herefordshire
Grid ref SO 527513

On

20th September 2007

10am – 4pm

For more information

Contact – Tim Green, Countryside Ranger, Parks & Countryside Service, Herefordshire Council 01432 260346.

Email tgreen@herefordshire.gov.uk

**Put it in your
Diary now**

Training and Supporting Volunteers

On Wednesday 28th March, at Worcester Woods Country Park a gaggle of green uniformed countryside staff from across the South-West region gathered to hear about Worcestershire County Council's experiences of working and training volunteers.

The day was kicked off with a short talk from Wade Muggleton about why engage with volunteers at all, followed by Andy Maginnis talking about the historical perspective of volunteering.

After a relaxing lunch sat in the 'Worcestershire Garden', a chance for a short guided walk around the new eco-building at the Country



Training and Supporting Volunteers

Park was given.

In the afternoon Amanda Hill and Wade Muggleton talked about how we work with our volunteers, and things that we found useful when dealing with them.

The day finished with a talk from me about the Worcestershire Wardens initiative that has seen several organisations that work with volunteers across the county create a unique partnership to provide the best possible opportunity to benefit from all of the different experiences and facilities we can provide for them.

Kate Mustard

Countryside Greenspace Technical Support Officer
Worcestershire County Council
Worcester Woods Countryside Centre

Tel: 01905 766493

About the CMA

The CMA is the largest organisation of its kind representing professionals engaged in countryside and urban greenspace management throughout England and Wales

Formed in 1966, CMA links professionals working in a range of environments from Urban and Country Parks to National Parks, Local and National Nature Reserves and other protected areas.

Members are employed in a variety of different roles from Rangers and Wardens to Project Officers, Rights of Way Officers and Ecologists and for a variety of organisations including Local Authorities, National Park Authorities, the Forestry Commission, National Trust, Wildlife Trusts, Water Authorities and Natural England.

CMA's diverse membership is linked by common themes such as conservation management, information and interpretation, environmental education, sustainability, social inclusion, recreation management and environmental protection.

CMA aims to:

- Be an effective and professional membership organisation offering a structure for continuing professional development.
- Promote professional and sustainable development of the countryside and urban greenspace.
- Inform the decision making process of organisations involved in the management of the countryside and urban greenspace.
- Provide information, training and authoritative comment on countryside and urban greenspace issues.

SW Coast Path Goes National

Improving access to the south west coast

For many people the south west's magnificent coastal landscape defines the region, it is the reason many people decide to live here and the focus for a huge tourism industry. But, it is also a productive landscape, containing wildlife habitats of international importance, and requires careful and well resourced management to balance the pressures upon it.

The coastline and estuaries of the South West do have a high level of access, with the South West Coast Path giving largely uninterrupted opportunities. However, even here there are some real problem areas where people are obliged to take major diversions inland because a way through on the coast cannot be negotiated. There are sections where the legal rights shown on the map have been lost through erosion, or where the route is difficult or impossible to use in practice (e.g. because of missing or decayed steps, bridges etc), or where there is no clear indication of any public rights on the ground.

Elsewhere along England's 4,500 km coastline the situation is far worse, with almost a third having no known access and the remainder often being fragmented without 'join-up' into a useable continuous route. Most importantly, although people do have access to the beach around much of the coast, this access is sometimes uncertain and it is often not based on clear legal rights.

For those reasons, when asked by the Government to recommend how best to deliver its manifesto commitment to improve people's access to the English coastline, Natural England proposed the introduction of legislation to create a new right of public access within a 'coastal access corridor' around the whole coast.

Our vision is that people could arrive at the coast and explore it with confidence

and certainty that whether they turn right or left there will be good, secure,

SW Coast Path Goes National

well-managed access, with some areas of 'spreading room' – such as headlands and uncultivated land – en route, and opportunities to enjoy a rich and varied natural environment as they go. A fundamental feature of the new legislation would be that the access corridor - and the associated public rights through it - could be 'rolled back' automatically with any erosion that occurs in the future.

We are proposing a flexible local approach to the alignment of the coastal corridor. This will provide every opportunity for local people, business and other interest groups to agree sensible local solutions to match local circumstances to achieve a balance between people's legitimate expectations to have access to their own coastline and the needs of coastal property owners, the protection of wildlife and conservation interests, and the need



Photo Courtesy of Natural England

SW Coast Path Goes National

to minimise health and safety risks. At the same time we would look for local opportunities to improve provision for horse riding, circular walks, new routes to the coast from inland, and easy access for all trails.

We anticipate that some form of improvement or gap filling would be required on about half of the English coast, though the amount of activity would be scalable according to the resources available, and we will want to work closely with access authorities and managers to ensure they are properly funded to help us get the access right.

For Natural England the principles are clear: the public should have consistent and secure access around their coastline, with long term funding and high quality management.

James Taylor South West Advocacy & Partnerships Team
Natural England

Tel 01242 521381
ISjames.taylor@naturalengland.org.uk

If you have any comments on the usefulness or accurateness or otherwise of the Long range forecast email the editor at cma.souwester@yahoo.co.uk



Long Range Forecast 2007

With Thanks to www.metcheck.com

| From | To | Usual Weather | Confidence |
|--------|--------|--|---|
| 23 Apr | 16 May | A cool period usually, however the Atlantic starts to quieten down and winds from the North or East are very common whilst Westerlies are rare. | 67%  |
| 17 May | 31 May | This period is known as the fore-monsoon, traditionally dry and warm with high pressure over the UK and continent. | 88%  |
| 1 Jun | 4 Jun | The first wave of the 'European Summer Monsoon' as low pressure moves in from the West bringing cooler weather and heavy slow moving showers. | 77%  |
| 10 Jun | 14 Jun | The second wave of the 'European Summer Monsoon' bringing more wet and windy weather, between the periods expect better weather as the Azores high begins to expand. | 77%  |
| 18 Jun | 22 Jun | The third and final wave of the 'European Summer Monsoon' brings more wet and windy weather to the UK with further heavy showers. | 77%  |
| 10 Jul | 22 Jul | A traditional warm period for the UK, the first of the 'Phew, whatta scorcher!' headlines hits the press as the Azores high builds and extends over the UK. | 50%  |
| 23 Jul | 30 Jul | Spanish plumes and stagnant areas of low pressure are very common during this period bringing heavy thunderstorms. | 77%  |
| 31 Jul | 8 Aug | Again, a potentially thundery period of the year but this is the period where the hottest day of the year is likely to occur. | 50%  |
| 16 Aug | 30 Aug | Summer starts to fade as the first of the Autumn storms arrives bringing cooler, unsettled weather to many areas, high pressure may hang on in the South for a while longer. | 67%  |
| 1 Sep | 17 Sep | The 'Old Wives Summer' begins as high pressure crosses the UK en route to Siberia bringing a period of 3 or 4 fine days followed by showers. | 87%  |

Membership Page

A chance for your feedback.....

Change of Details:

Name:

Membership Number:

Address:

Tel:

E-mail:

ALSO:

We would welcome your views and comments on the following:

- Would you be willing to run a training day for the CMA or are there any training needs you would like us to cover?

- Details:

- Would you be interested in attending a CMA South West Region social gathering – if so any ideas??

(e.g. site visits, interesting projects, BBQ, skittles, sports challenge)

- Any other comments:

Alternatively – contact your County Rep.

We need **YOU** to find one extra person to join CMA to help safeguard our future. Show them your copy of Sou'wester and Ranger magazines, ask them to visit our website to see the prospectus and give them a copy of the application form on the back cover of this newsletter.

22 RETURN TO: Regional Chair, details on the inside front cover.

Membership Categories

Membership Categories:-

Accredited Member:

Open to individuals who have:

1. Satisfied relevant occupational standards at level 3 or above, or successfully completed the competence assessment form **and**
2. Experience in paid employment within the industry at an appropriate level for at least three years **and** a qualification at or above HND level

Subscription: £50 (if your employer is not a Corporate Member)
£40 (if your employer is a Corporate Member)

Associate Member:

Open to individuals working in the countryside or urban greenspace management (eligibility based upon job description)

Subscription: £30 (if your employer is not a Corporate Member)
£24 (if your employer is a Corporate Member)

Affiliate Member:

Open to anyone with an interest in countryside or urban greenspace management

Subscription: £30 (waged & not employed by a Corporate Member)
£24 (waged & employed by a Corporate Member)
£20 (unwaged and not employed by a Corporate Member)
£16 (unwaged and employed by a Corporate Member)

Corporate Member:

Open to employing organisations, training bodies and educational establishments

Subscription: Please contact Writtle College for details (contacts inside front cover)

CMA Application Form

PLEASE COMPLETE IN BLOCK CAPITALS AND BLACK INK
ALL INDIVIDUAL CATEGORIES

Title _____ Surname _____
Forenames _____
Home address (or address for correspondence)
Address _____ Town _____
County _____ Postcode _____
Telephone (H) _____ (W) _____ (Fax) _____
e-mail _____

Membership category applied for (tick one only)

Accredited Member Associate Member Affiliate Member

CORPORATE AND BUSINESS CATEGORIES

Contact name:

Title _____ Surname _____
Forenames _____
Home address (or address for correspondence)
Address _____ Town _____
County _____ Postcode _____
Telephone (H) _____ (W) _____ (Fax) _____
e-mail _____

Membership category applied for (tick one only)

Corporate Member Business Supporter

Number of employees or students that you estimate may wish to join in their own right (Corporate members only)

NB Please count volunteers as employees

The membership year is from 1st April-31st March

PLEASE RETURN TO WRITTLÉ COLLEGE (Details inside front cover)